

气体消音器

专利产品

全频降噪 | 超强静音



型号：XY-120

材质：ABS

功能：降噪 | 除水 | 除油

规格：147x60x138



型号：XY-175

材质：ABS

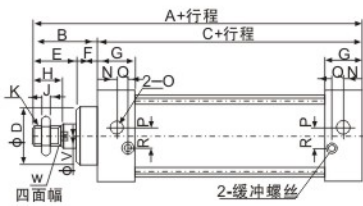
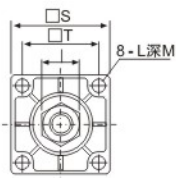
功能：降噪 | 除水 | 除油

规格：204x60x194

**标准气缸
SC系列**

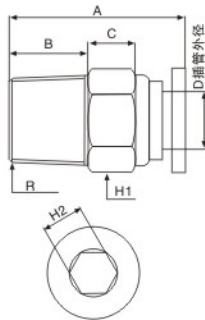


缸径/符号	A	B	C	D	E	F	G	H	I	J	K
32	140	47	93	28	32	15	27.5	22	17	6	M10X1.25
40	142	49	93	32	32	15	27.5	24	17	7	M12X1.25
50	150	57	93	38	42	15	27.5	32	23	8	M16X1.5
63	153	57	96	38	42	15	27.5	32	23	8	M16X1.5
80	182	75	107	47	54	21	33	40	26	10	M20X1.5
100	188	75	113	47	54	21	33	40	26	10	M20X1.5
125	246	101	145	60	69	32	40	54	39	11	M27X2
160	315	135	180	65	80	36	50	60	52	14	M36X2
200	334	149	185	80	80	48	50	60	52	14	M36X2
250	384	189	195	90	119	70	50	84	65	21	M42X2
320	440	206	234	110	126	80	55	96	75	24	M48X2
400	440	190	250	128	110	80	60	70	85	28	M56X4



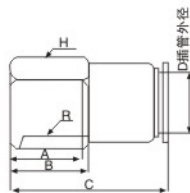
缸径/符号	M	N	O	P	Q	R	S	T	V	W	L
32	9.5	12.7	G1/8"	3.5	7.5	7	45	32	12	10	M6X1.0
40	9.54	13.5	G1/4"	6	8.2	9	50	37	16	14	M6X1.0
50	9.5	13.5	G1/4"	8.5	8.2	9	62	47	20	17	M6X1.0
63	9.5	13.5	G3/8"	7	8.2	8.5	75	56	20	17	M8X1.25
80	11.5	16.5	G3/8"	10	9.5	14	94	70	25	22	M10X1.5
100	11.5	16.5	G1/2"	11	9.5	14	112	84	25	22	M10X1.5
125	15	20	G1/2"	-	-	-	140	110	32	29	M12X1.75
160	15	135	G1/2"	-	-	-	180	140	40	36	M16X2
200	25	149	G3/4"	-	-	-	220	175	50	46	M16X2
250	25	189	G3/4"	-	-	-	280	220	50	46	M20X2.5
320	27.5	206	G1"	-	-	-	350	280	70	65	M24X3
400	30	190	G1"	-	-	-	430	350	80	76	M30X3.5

PC螺纹直通



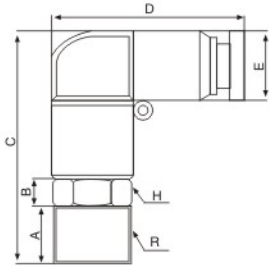
型号 Model	D管外径	R	A	B	C	H1	H2
PC4-M5	4	M5	20	7	7	10	2
PC4-01		R1/8	18.5	4	5.5	10	3
PC4-02		R1/4	18.5	7	4.5	14	3
PC4-03		R3/8	18.5	8	4	17	3
PC6-M5	6	M5	21.5	9	6.5	12	2
PC6-01		R1/8	21.5	4	7.5	12	4
PC6-02		R1/4	21	7	6	14	4
PC6-03		R3/8	19	8	4.5	17	4
PC6-04	R1/2	21	9	5	21	4	
PC8-01	8	R1/8	25	11	7.5	14	5
PC8-02		R1/4	23.5	7	7.5	14	6
PC8-03		R3/8	21	8	4.5	17	6
PC8-04		R1/2	23	9	4.5	21	6
PC10-01	10	R1/8	27	11	9	17	5
PC10-02		R1/4	27	8	11	17	6
PC10-03		R3/8	27	9	9	17	8
PC10-04		R1/2	25	11	6.5	21	5
PC12-01	12	R1/8	28.5	7	10	19	6
PC12-02		R1/4	29.5	8	10	19	8
PC12-03		R3/8	28	9	10	19	10
PC12-04		R1/2	27.5	11	8	21	6
PC14-02	14	R1/4	32.5	8	12.5	21	10
PC14-03		R3/8	31	9	13	21	10
PC14-04		R1/2	33	11	10	21	6
PC16-02	16	R1/4	34	8	13	24	10
PC16-03		R3/8	32.5	9	13	24	12
PC16-04		R1/2	31.5	11	13	24	12
PC16-06		R3/4	33.5	13	10	27	8

**PCF
内螺纹直通**



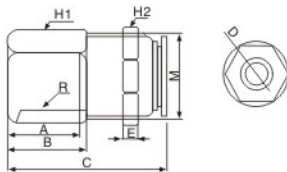
型号 Model	D管外径	R	A	B	C	H
PCF4-M5	4	M5	6	10	22	10
PCF4-01		R1/8	9	11	24	12
PCF4-02		R1/4	10	12	26	15
PCF4-03		R3/8	11	13	27	19
PCF6-M5	6	M5	6	10	24.5	12
PCF6-01		R1/8	9	11	27.5	12
PCF6-02		R1/4	10	12	27.5	15
PCF6-03		R3/8	11	13	28.5	19
PCF6-04	R1/2	13	15	31	24	
PCF8-01	8	R1/8	9	11	28	14
PCF8-02		R1/4	10	12	28	15
PCF8-03		R3/8	11	13	28	19
PCF8-04		R1/2	13	15	31.5	24
PCF10-01	10	R1/8	9	11	29	17
PCF10-02		R1/4	10	12	30	17
PCF10-03		R3/8	11	13	31	19
PCF10-04		R1/2	13	15	33	24
PCF12-01	12	R1/8	9	11	32	19
PCF12-02		R1/4	10	12	32	19
PCF12-03		R3/8	11	13	32	19
PCF12-04		R1/2	13	15	34	24

**PL
L型螺纹弯通**



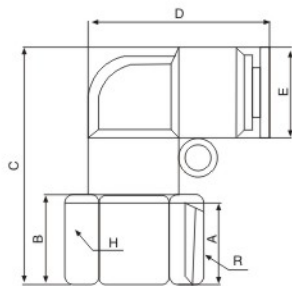
型号 Model	A	B	C	D	H	R	E
PL4-M5	4	5	28.5	23	10	M5	11
PL4-01	7	5	31.5	23	10	R1/8	11
PL4-02	8	5	32.5	23	14	R1/4	11
PL4-03	9	5	33.5	23	17	R3/8	11
PL6-M5	4	5	31.5	27	12	M5	13
PL6-01	7	5	34.5	27	12	R1/8	13
PL6-02	8	5	35.5	27	14	R1/4	13
PL6-03	9	5	36.5	27	17	R3/8	13
PL6-04	11	5	38.5	27	21	R1/2	13
PL8-01	7	5	37.5	30.5	14	R1/8	15
PL8-02	8	5	38.5	30.5	14	R1/4	15
PL8-03	9	5	39.5	30.5	17	R3/8	15
PL8-04	11	5	41.5	30.5	21	R1/2	15
PL10-01	7	5	41	34	17	R1/8	18.5
PL10-02	8	5	42	34	17	R1/4	18.5
PL10-03	9	5	43	34	17	R3/8	18.5
PL10-04	11	5	45	34	21	R1/2	18.5
PL12-01	7	5	45	38.5	19	R1/8	21
PL12-02	8	5	46	38.5	19	R1/4	21
PL12-03	9	5	47	38.5	19	R3/8	21
PL12-04	11	5	49	38.5	21	R1/2	21
PL14-02	8	6	54	45.5	24	R1/4	26
PL14-03	9	6	55	45.5	24	R3/8	26
PL14-04	11	6	57	45.5	24	R1/2	26
PL16-02	8	6	54	46	24	R1/4	26
PL16-03	9	6	55	46	24	R3/8	26
PL16-04	11	6	57	46	24	R1/2	26
PL16-06	13	6	59	46	27	R3/4	26

**PMF
隔板内螺纹直通**



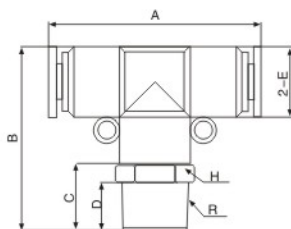
型号 Model	D	R	A	B	C	H1	H2	E	M
PMF4-M5	4	M5	6	10	26	14	14	3	M12X1
PMF4-01		R1/8	9	11	28	14	14	3	M12X1
PMF4-02		R1/4	10	12	30	15	14	3	M12X1
PMF4-03		R3/8	11	13	31	19	14	3	M12X1
PMF6-M5	6	M5	6	10	29	15	17	3	M14X1
PMF6-01		R1/8	9	11	31.5	15	17	3	M14X1
PMF6-02		R1/4	10	12	31.5	15	17	3	M14X1
PMF6-03		R3/8	11	13	32.5	19	17	3	M14X1
PMF6-04	R1/2	13	15	35.5	24	17	3	M14X1	
PMF8-01	8	R1/8	9	11	33	17	19	3.5	M16X1
PMF8-02		R1/4	10	12	33	17	19	3.5	M16X1
PMF8-03		R3/8	11	13	33	19	19	3.5	M16X1
PMF8-04		R1/2	13	15	37	24	19	3.5	M16X1
PMF10-01	10	R1/8	9	11	34	21	24	4.5	M20X1
PMF10-02		R1/4	10	12	34	21	24	4.5	M20X1
PMF10-03		R3/8	11	13	35	21	24	4.5	M20X1
PMF10-04		R1/2	13	15	37.5	24	24	4.5	M20X1
PMF12-01	12	R1/8	9	11	36	24	27	4.5	M22X1
PMF12-02		R1/4	10	12	36	24	27	4.5	M22X1
PMF12-03		R3/8	11	13	35	24	27	4.5	M22X1
PMF12-04		R1/2	13	15	37.5	24	27	4.5	M22X1

**PLF
L型内螺纹弯通**



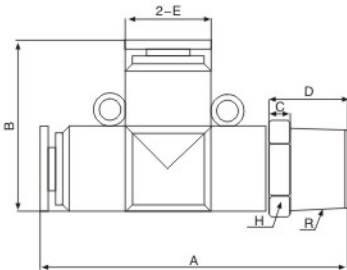
型号 Model	D	R	A	B	C	H	E
PLF4-M5	23	M5	6	6	25.5	10	11
PLF4-01	23	R1/8	9	10.5	30	12	11
PLF4-02	23	R1/4	10	11.5	31	15	11
PLF4-03	27	R3/8	11	13	32.5	19	11
PLF6-M5	27	M5	6	6	28.5	12	13
PLF6-01	27	R1/8	9	10.5	33	12	13
PLF6-02	27	R1/4	10	11.5	34	15	13
PLF6-03	27	R3/8	11	13	35.5	19	13
PLF6-04	30.5	R1/2	13	15	37.5	24	13
PLF8-01	30.5	R1/8	9	10.5	36	14	15
PLF8-02	30.5	R1/4	10	11.5	37	15	15
PLF8-03	30.5	R3/8	11	13	38.5	24	15
PLF8-04	34	R1/2	13	15	40.5	19	15
PLF10-01	34	R1/8	9	10.5	39.5	17	18.5
PLF10-02	34	R1/4	10	11.5	40.5	17	18.5
PLF10-03	34	R3/8	11	13	42	19	18.5
PLF10-04	38.5	R1/2	13	15	44	24	18.5
PLF12-01	38.5	R1/8	9	10.5	43.5	19	21
PLF12-02	38.5	R1/4	10	11.5	44.5	19	21
PLF12-03	38.5	R3/8	11	13	46	19	21
PLF12-04	23	R1/2	13	15	48	24	21

**PB
T型螺纹三通**



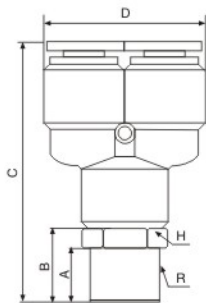
型号 Model	A	B	C	D	H	R	E
PB4-M5	35	28	9	4	10	M5	11
PB4-01	35	31	12	7	10	R1/8	11
PB4-02	35	32	13	8	14	R1/4	11
PB4-03	35	33	14	9	17	R3/8	11
PB6-M5	41	31	9	4	12	M5	13
PB6-01	41	34	12	7	12	R1/8	13
PB6-02	41	35	13	8	14	R1/4	13
PB6-03	41	36	14	9	17	R3/8	13
PB6-04	41	38	16	11	21	R1/2	13
PB8-01	46	37.5	12	7	14	R1/8	15
PB8-02	46	38.5	13	8	14	R1/4	15
PB8-03	46	39.5	14	9	17	R3/8	15
PB8-04	46	41.5	16	11	21	R1/2	15
PB10-01	50.5	41	12	7	17	R1/8	18.5
PB10-02	50.5	42	13	8	17	R1/4	18.5
PB10-03	50.5	43	14	9	17	R3/8	18.5
PB10-04	50.5	45	16	11	21	R1/2	18.5
PB12-01	56.5	45	12	7	19	R1/8	21
PB12-02	56.5	46	13	8	19	R1/4	21
PB12-03	56.5	47	14	9	19	R3/8	21
PB12-04	56.5	49	16	11	21	R1/2	21
PB14-02	66	53.5	14	8	21	R1/4	26
PB14-03	66	54.5	15	9	21	R3/8	26
PB14-04	66	56.5	17	11	21	R1/2	26
PB16-02	66.5	53.5	14	8	24	R1/4	26
PB16-03	66.5	54.5	15	9	24	R3/8	26
PB16-04	66.5	56.5	17	11	24	R3/4	26
PB16-06	66.5	58.5	19	13	27	R1/2	26

**PD
T型螺纹侧三通**



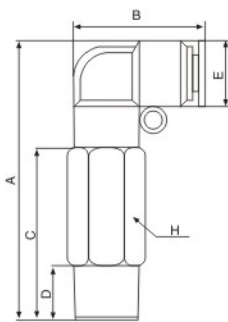
型号 Model	A	B	C	D	H	R	E
PD4-01	40	23	5	9	10	M5	11
PD4-02	43	23	5	12	10	R1/8	11
PD4-03	44	23	5	13	14	R1/4	11
PD6-M5	45	23	5	14	17	R3/8	11
PD6-01	45.5	27	5	9	12	M5	13
PD6-02	48.5	27	5	12	12	R1/8	13
PD6-03	49.5	27	5	13	14	R1/4	13
PD6-04	50.5	27	5	14	17	R3/8	13
PD8-01	52.5	27	5	16	21	R1/2	13
PD8-02	53	30.5	5	12	14	R1/8	15
PD8-03	54	30.5	5	13	14	R1/4	15
PD8-04	55	30.5	5	14	17	R3/8	15
PD10-01	57	30.5	5	16	21	R1/2	15
PD10-02	57	34	5	12	17	R1/8	18.5
PD10-03	58	34	5	13	17	R1/4	18.5
PD10-04	59	34	5	14	17	R3/8	18.5
PD12-01	61	34	5	16	21	R1/2	18.5
PD12-02	63	38.5	5	12	19	R1/8	21
PD12-03	64	38.5	5	13	19	R1/4	21
PD12-04	65	38.5	5	14	19	R3/8	21
PD14-02	67	38.5	5	16	21	R1/2	21
PD14-03	70	43	6	14	21	R1/4	23.5
PD14-04	71	43	6	15	21	R3/8	23.5
PD16-02	73	43	6	17	21	R1/2	23.5
PD16-03	74	46	6	14	24	R1/4	26
PD16-04	75	46	6	15	24	R3/8	26
PD16-06	77	46	6	17	24	R1/2	26
PD4-M5	79	46	6	19	24	R3/4	26

**PX
Y型螺纹三通**



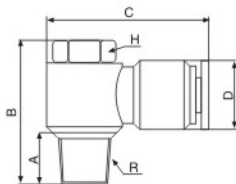
型号 Model	A	B	C	D	H	R
PX4-M5	4	9	39	21.5	10	M5
PX4-01	7	12	42	21.5	10	R1/8
PX4-02	8	13	43	21.5	14	R1/4
PX4-03	9	14	44	21.5	17	R3/8
PX6-M5	4	9	43	25.5	12	M5
PX6-01	7	12	46	25.5	12	R1/8
PX6-02	8	13	47	25.5	14	R1/4
PX6-03	9	14	48	25.5	17	R3/8
PX6-04	11	16	50	25.5	21	R1/2
PX8-01	7	12	50	30	14	R1/8
PX8-02	8	13	51	30	14	R1/4
PX8-03	9	14	52	30	17	R3/8
PX8-04	11	16	54	30	21	R1/2
PX10-01	7	12	56.5	36	17	R1/8
PX10-02	8	13	57.5	36	17	R1/4
PX10-03	9	14	58.5	36	17	R3/8
PX10-04	11	16	60.5	36	21	R1/2
PX12-01	7	12	64	41	19	R1/8
PX12-02	8	13	65	41	19	R1/4
PX12-03	9	14	66	41	19	R3/8
PX12-04	11	16	68	41	21	R1/2
PX14-02	8	14	65	51	24	R1/4
PX14-03	9	15	66	51	24	R3/8
PX14-04	11	17	68	51	24	R1/2
PX16-02	8	14	65.5	51	24	R1/4
PX16-03	9	15	66.5	51	24	R3/8
PX16-04	11	17	68.5	51	24	R1/2
PX16-06	13	19	70.5	51	24	R3/4

**PLL
加长L型螺纹弯通**



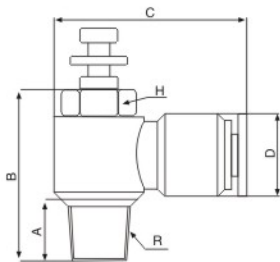
型号 Model	A	B	C	D	H	E
PLL4-M5	43.5	23	24	4	10	11
PLL4-01	46.5	23	27	7	10	11
PLL4-02	47.5	23	28	8	14	11
PLL6-M5	46.5	27	24	4	12	13
PLL6-01	49.5	27	27	7	12	13
PLL6-02	50.5	27	28	8	14	13
PLL6-03	51.5	27	29	9	17	13
PLL6-04	53.5	27	31	11	21	13
PLL8-01	52.5	30.5	27	7	14	15
PLL8-02	53.5	30.5	28	8	14	15
PLL8-03	54.5	30.5	29	9	17	15
PLL8-04	56.5	30.5	31	11	21	15
PLL10-01	56	34	27	7	17	18.5
PLL10-02	57	34	28	8	17	18.5
PLL10-03	58	34	29	9	17	18.5
PLL10-04	60	34	31	11	21	18.5
PLL12-01	60	38.5	27	7	19	21
PLL12-02	61	38.5	28	8	19	21
PLL12-03	62	38.5	29	9	19	21
PLL12-04	64	38.5	31	11	21	21

PH外六角



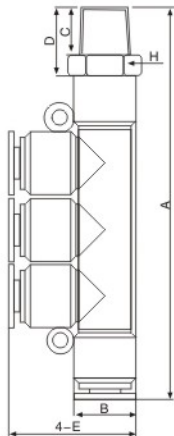
型号 Model	A	B	C	H	R	D
PH4-M5	5	18	26.5	8	M5	11
PH4-01	7.5	23.5	31.5	11	R1/8	13
PH4-02	10	27	34	15	R1/4	13
PH6-M5	5	18	28	8	M5	13
PH6-01	7.5	23.5	32	11	R1/8	13
PH6-02	10	27	35	15	R1/4	13
PH6-03	10.5	31	41.5	19	R3/8	15
PH6-04	12	35	45	22	R1/2	15
PH8-01	7.5	23.5	34	11	R1/8	15
PH8-02	10	27	38	15	R1/4	15
PH8-03	10.5	31	42	19	R3/8	15
PH8-04	12	35	45.5	22	R1/2	15
PH10-01	7.5	23.5	36.5	11	R1/8	18.5
PH10-02	10	27	40.5	15	R1/4	18.5
PH10-03	10.5	31	45	19	R3/8	18.5
PH10-04	12	35	49	22	R1/2	18.5
NPH12-01	7.5	23.5	39	11	R1/8	21
PH12-02	10	27	42	15	R1/4	21
PH12-03	10.5	31	45.5	19	R3/8	21
PH12-04	12	35	49	22	R1/2	21

SL L型节流阀



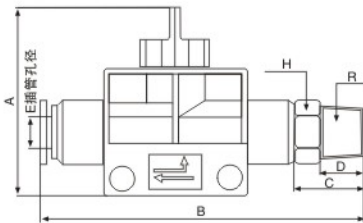
型号 Model	A	B	C	H	R	D
SL4-M5	5.5	19	26.5	8	M5	11
SL4-01	8.5	24.5	31.5	11	R1/8	13
SL4-02	11.5	28.5	34	15	R1/4	13
SL6-M5	5.5	19	28	8	M5	13
SL6-01	8.5	24.5	32	11	R1/8	13
SL6-02	11.5	28.5	35	15	R1/4	13
SL6-03	12	32	41.5	19	R3/8	15
SL6-04	13	36	45	22	R1/2	15
SL8-01	8.5	24.5	34	11	R1/8	15
SL8-02	11.5	28.5	38	15	R1/4	15
SL8-03	12	32	42	19	R3/8	15
SL8-04	13	36	45.5	22	R1/2	15
SL10-01	8.5	24.5	36.5	11	R1/8	18.5
SL10-02	11.5	28.5	40.5	15	R1/4	18.5
SL10-03	12	32	45	19	R3/8	18.5
SL10-04	13	36	49	22	R1/2	18.5
SL12-01	8.5	24.5	39	11	R1/8	21
SL12-02	11.5	28.5	42	15	R1/4	21
SL12-03	12	32	45.5	19	R3/8	21
SL12-04	13	36	49	22	R1/2	21
SL16-04	13	36	54.5	22	R1/2	26

PKB螺纹五通



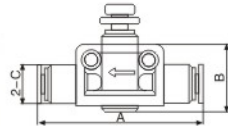
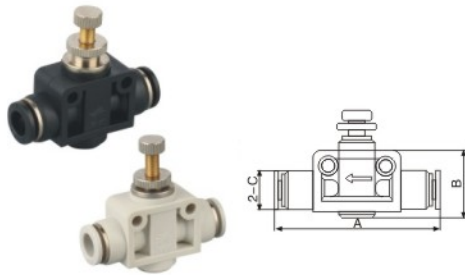
型号 Model	A	B	C	H	R	D
PKB4-M5	64	23	4	9	10	11
PKB4-01	67	23	7	12	10	11
PKB4-02	68	23	8	13	14	11
PKB6-M5	70.5	27	4	9	12	13
PKB6-01	73.5	27	7	12	12	13
PKB6-02	74.5	27	8	13	14	13
PKB6-03	75.5	27	9	14	17	13
PKB6-04	77.5	27	11	16	21	13
PKB8-01	84.5	30	7	12	14	15
PKB8-02	85.5	30	8	13	14	15
PKB8-03	86.5	30	9	14	17	15
PKB8-04	88.5	30	11	16	21	15
PKB10-01	96	35.5	7	12	17	18.5
PKB10-02	97	35.5	8	13	17	18.5
PKB10-03	98	35.5	9	14	17	18.5
PKB10-04	100	35.5	11	16	21	18.5
PKB12-01	104.5	39	7	12	19	21
PKB12-02	105.5	39	8	13	19	21
PKB12-03	106.5	39	9	14	19	21
PKB12-04	108.5	39	11	16	21	21

HVSF螺纹手阀



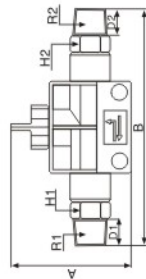
型号 Model	A	B	C	D	H	R	E插管外径
HVSF4-M5	40.5	28	9	9	10	M5	4
HVSF4-01	40.5	31	12	12	10	R1/8	4
HVSF4-02	40.5	32	13	13	14	R1/4	4
HVSF4-03	40.5	33	14	14	17	3/8	4
HVSF6-M5	40.5	31	9	9	12	M5	6
HVSF6-01	40.5	34	12	12	12	R1/8	6
HVSF6-02	40.5	35	13	13	14	R1/4	6
HVSF6-03	40.5	36	14	14	17	R3/8	6
HVSF6-04	40.5	38	16	16	21	R1/2	6
HVSF8-01	40.5	37.5	12	12	14	R1/8	8
HVSF8-02	40.5	38.5	13	13	14	R1/4	8
HVSF8-03	40.5	39.5	14	14	17	R3/8	8
HVSF8-04	40.5	41.5	16	16	21	R1/2	8
HVSF10-01	45	41	12	12	17	R1/8	10
HVSF10-02	45	42	13	13	17	R1/4	10
HVSF10-03	45	43	14	14	17	R3/8	10
HVSF10-04	45	45	16	16	21	R1/2	10
HVSF12-01	45	45	12	12	19	R1/8	12
HVSF12-02	45	46	13	13	19	R1/4	12
HVSF12-03	45	47	14	14	19	R3/8	12
HVSF12-04	45	49	16	16	21	R1/2	12

PA管道型节流阀



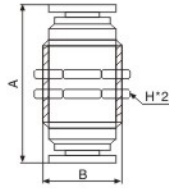
型号 Model	A	B	C
PA-4	40	16	11
PA-6	47	23	13
PA-8	51	26	15
PA-10	61	27	18.5
PA-12	64	30	21

HVSS螺纹手阀



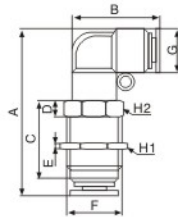
型号 Model	A	R1	D1	H1	B	R2	D2	H2
HVSS01-01	40.5	R1/8	7	12	63	R1/8	7	12
HVSS02-01	40.5	R1/4	8	14	64	R1/8	7	12
HVSS02-02	40.5	R1/4	8	14	67	R1/4	8	17
HVSS03-02	45	R3/8	9	17	80	R1/4	8	17
HVSS03-03	45	R3/8	9	17	81	R3/8	9	17
HVSS04-03	45	R1/2	11	21	83	R3/8	9	21
HVSS04-04	45	R1/2	11	21	85	R1/2	11	14

PM隔板直通



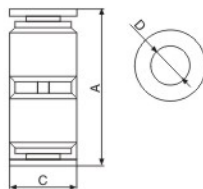
型号 Model	A	B	C*2
PM-4	29	M12X1	14
PM-6	33	M14X1	17
PM-8	34	M16X1	19
PM-10	37	M20X1	24
PM-12	40	M22X1	27
PM-16	46.5	M26X1	30

**PLM
隔板弯通**



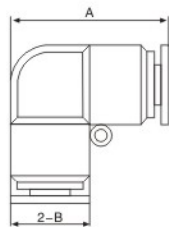
型号 Model	A	B	C	D	E	F	H1	H2	G
PLM-4	46	27	17.5	5	3	M14X1	17	15	11
PLM-6	50	30.5	17.5	5	3.5	M16X1	19	17	13
PLM-8	55	34	19	5	4.5	M20X1	24	21	15
PLM-10	59.5	38.5	19	5	4.5	M22X1	27	24	18.5
PLM-12	41.5	23	17	5	3	M12X1	14	14	21

PU直通



型号 Model	A	D	C
PU-4	31.5	4	11
PU-6	36	6	13
PU-8	38	8	15
PU-10	43	10	18.5
PU-12	47.5	12	21
PU-14	49	14	23.5
PU-16	53	16	26

PV L型弯通



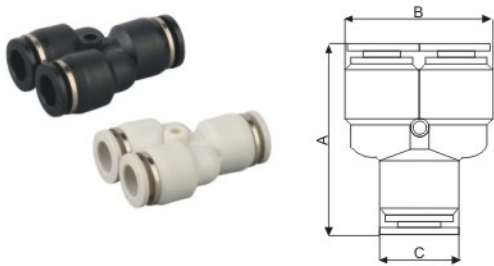
型号 Model	A	B
PV-4	23	11
PV-6	27	13
PV-8	30.5	15
PV-10	34	18.5
PV-12	38.5	21
PV-14	45.5	23.5
PV-16	46	26

PE T型三通



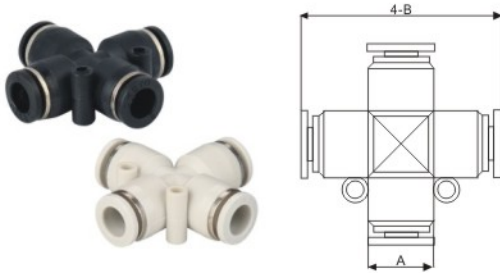
型号 Model	A	B	C
PE-4	35	23	11
PE-6	41	27	13
PE-8	46	30.5	15
PE-10	50.5	34	18.5
PE-12	56.5	38.5	21
PE-14	62	43	23.5
PE-16	66.5	46	26

PY Y型三通



型号 Model	A	B	C
PY-4	33.5	21.5	11
PY-6	39	25.5	13
PY-8	43	30	15
PY-10	50	36	18.5
PY-12	58	41	21
PY-14	57	51	26
PY-16	57.5	51	26

PZA 十字四通



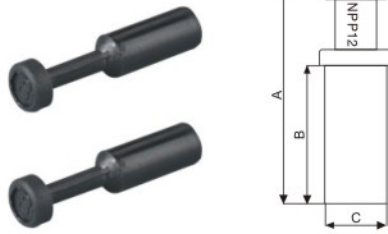
型号 Model	A	B
PZA-4	35.5	11
PZA-6	41.5	13
PZA-8	46.5	15
PZA-10	51	18.5
PZA-12	58	21

PK五通



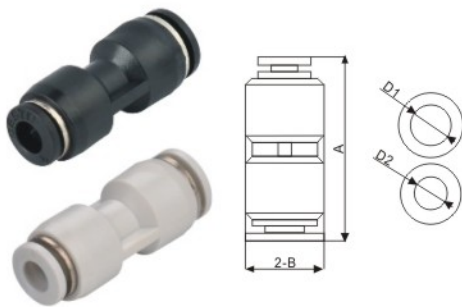
型号 Model	A	D	B
PK-4	59	23	11
PK-6	66	27	13
PK-8	76	30	15
PK-10	92	35.5	18.5
PK-12	98	39	21

PP管塞



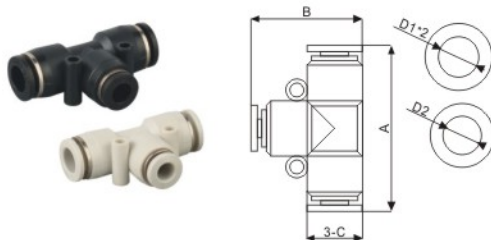
型号 Model	A	B	C
PP-4	30.5	19.5	4
PP-6	34.5	20.5	6
PP-8	38.5	22.5	8
PP-10	41	25	10
PP-12	43	27	12

PG直通变径



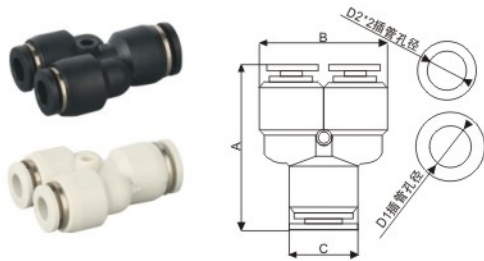
型号 Model	A	D1	D2	B
PG6-4	35	6	4	13
PG8-4	37	8	4	15
PG8-6	38	8	6	15
PG10-6	42.5	10	6	18.5
PG10-8	43	10	8	18.5
PG12-8	46.5	12	8	21
PG12-10	47	12	10	21
PG14-10	48.5	14	10	23.5
PG14-12	49	14	12	23.5
PG16-12	52	16	12	26
PG16-14	52.5	16	14	26

**PEG
T型三通变径**



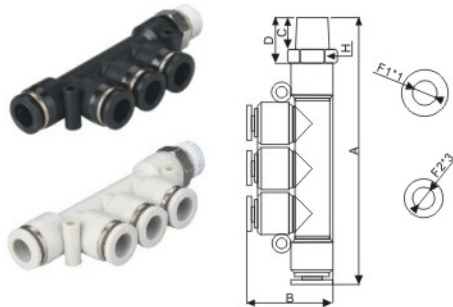
型号 Model	A	B	D1*2	D2	C
PEG6-4	41	26	6	4	13
PEG8-4	46	29.5	8	4	15
PEG8-6	46	30.5	8	6	15
PEG10-6	50.5	33	10	6	18.5
PEG10-8	50.5	33.5	10	8	18.5
PEG12-8	56.5	38	12	8	21
PEG12-10	56.5	38.5	12	10	21
PEG14-10	62	42.5	14	10	23.5
PEG14-12	62	43	14	12	23.5
PEG16-12	66.5	45	16	12	26
PEG16-14	66.5	45.5	16	14	26

**PW
Y型三通变径**



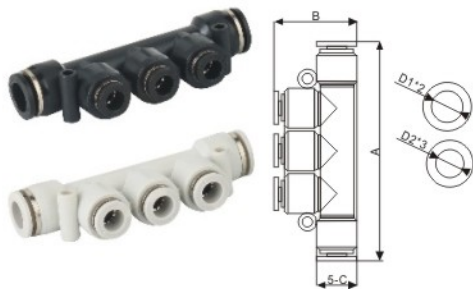
型号 Model	A	B	D1	D2*2	C
PW6-4	38	51	6	4	13
PW8-4	37	51	8	4	15
PW8-6	43	51	8	6	15
PW10-6	40.5	51	10	6	18.5
PW10-8	49	25	10	8	18.5
PW12-8	46.5	21.5	12	8	21
PW12-10	57	29	12	10	21
PW14-10	57	26.5	14	10	25.5
PW14-12	57	35	14	12	25.5
PW16-12	58	31	16	12	25.5
PW16-14	58	40	16	14	25.5

**PKD
螺纹五通变径**



型号 Model	A	B	C	D	H	F1*1	F2*3
PKD6-4-01	73.5	26.5	7	12	12	6	4
PKD8-6-01	84.5	29.5	7	12	14	8	6
PKD8-6-02	85.5	29.5	8	13	14	8	6
PKD10-6-03	98	34.5	9	14	17	10	6
PKD10-8-03	98	35	9	14	17	10	8
PKD12-8-04	108.5	38	11	16	21	12	8
PKD12-10-04	108.5	38.5	11	16	21	12	10
PKD10-6-02	97	34.5	8	13	17	10	6
PKD10-08-02	97	35	8	13	17	10	8
PKD12-8-03	106.5	38	9	14	19	12	8
PKD12-10-03	106.5	38.5	9	14	19	12	10

PKG五通变径



型号 Model	A	B	D1*2	D2*3	C
PKG6-4	66	26.5	6	4	13
PKG8-4	76	29	8	4	15
PKG8-6	76	29.5	8	6	15
PKG10-6	92	34.5	10	6	18.5
PKG10-8	92	35	10	8	18.5
PKG12-8	98	38	12	8	21
PKG12-10	98	38.5	12	10	21